

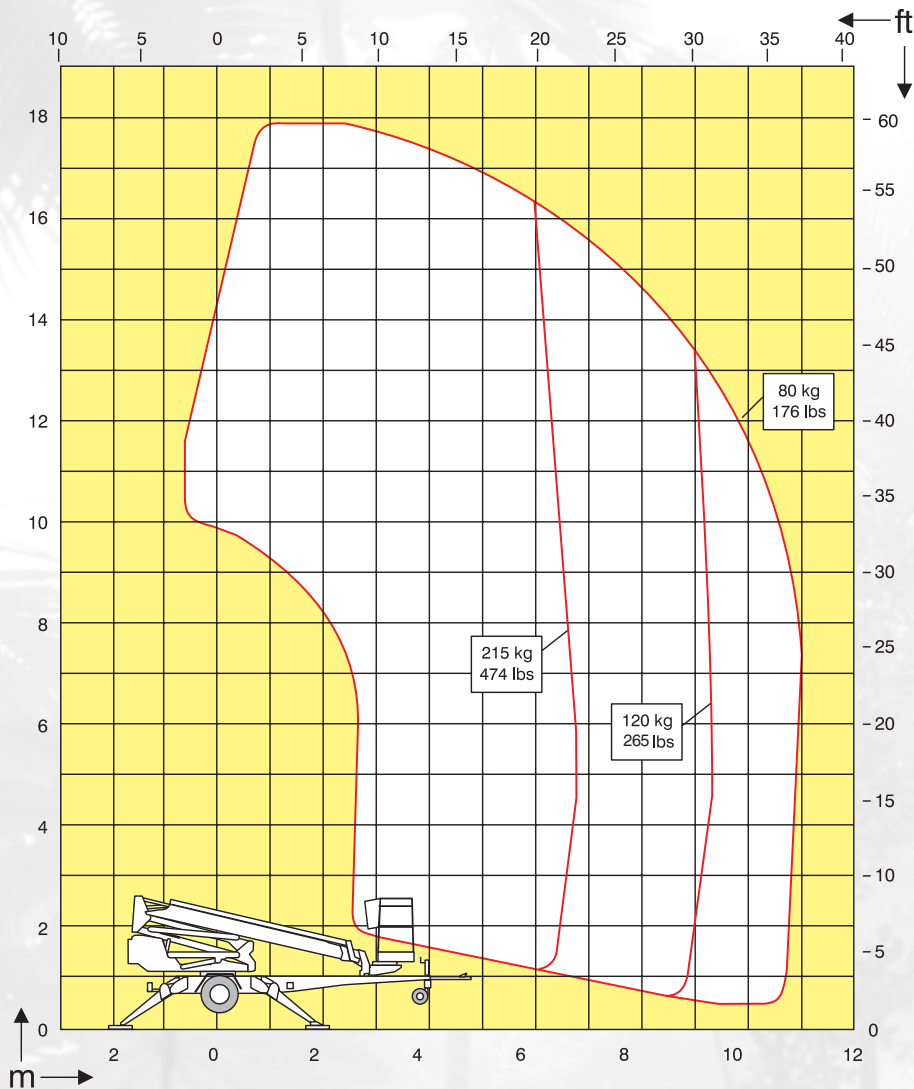


DINO 180XT

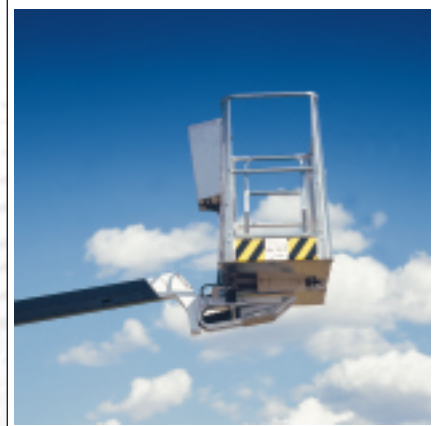
Greater versatility



Technical specifications on DINO 180XT



Working height	18.0 m	59'1"
Platform height	16.0 m	52'6"
Maximum outreach	10.9 m	35'9"
Support width	3.8 m	12'6"
Lifting capacity	215 kg	474 lbs
Basket size	0.7 x 1.3 m	2'4" x 4'3"
Boom rotation	continuous	continuous
Basket rotation	90°	90°
Boom control	proportional	proportional
Transport length	6.55 m	21'6"
Transport width	1.78 m	5'10"
Transport height	2.20 m	7'3"
Weight		
(with power pack)	2050 kg	4525 lbs
Driving system	standard	standard
AC-socket in the basket	standard	standard
Power supply	110/230VAC - 16A/10A	110/230VAC - 16A/10A
Gradeability	25%	25%



Cage rotation enables the cage to be accurately positioned.



The articulated riser gives improved up and over capability.



The platform can be fitted with an optional Honda petrol engine.



Specifications are subject to change without notice.

Manufacturer

DINO Lift®

Dino Lift Oy, Raikkolantie 145, FI-32210 Loimaa, Finland
Tel. +358 2 76 25 900, Fax +358 2 76 27 160
E-mail: dino@dinolift.com, Internet: www.dinolift.com

Dealer