

CDD10-080

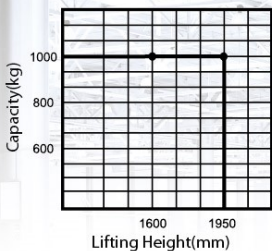
1.0 Ton Electric Stacker

Lifting Height: 1600-1950mm

25 YEARS

TOP1 FORKLIFT MANUFACTURER AND SALER
IN CHINA FOR CONSECUTIVE 25 YEARS

Load Curve



Advantages

Configuration and Performance

- Separately excited motor, Strong climbing ability.
- High strength forks.
- Built-in charger is standard.
- Automatic lifting limit, Motor and battery life extension.

Safety

- Stepless speed control system, safe and quiet.
- Controller with Multiple automatic protection
- Emergency reversing device/Emergency brake switch.

Fork over

Built-in charger

Free-maintained battery

Integrated fork, much stronger

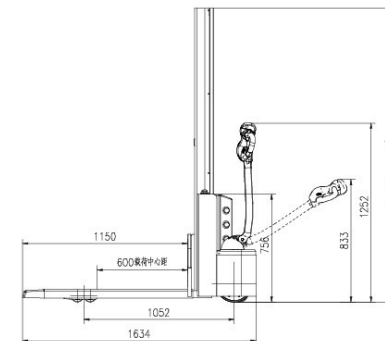
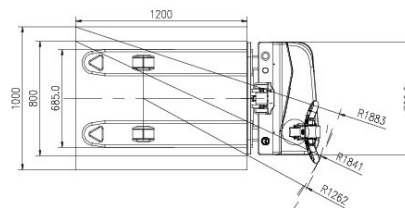
24 YEARS

TOP1 FORKLIFT MANUFACTURER AND SALER
IN CHINA FOR CONSECUTIVE 24 YEARS

Type	Lift height (mm)	Mast type	Outside width between legs (mm)	Inside width between legs (mm)
CDD10-080	1600/1950	SINGLE STAGE	550/600/650/685	180/230/280/315

Feature		
Model		CDD10
Configuration No.		080
Type		Fork over
Mast type		Single stage
Load capacity	kg	1000
Load center	mm	600
Wheel base	mm	1052
Operating type		Walkie
Wheels		
Wheels type		PU
Wheel quantity Driving wheel/Balance wheel/Bearing wheel		1/1/4
Dimension		
Standard lift height	mm	1600/1950
Max.extend height	mm	2055/2405
Mast lowered height	mm	2055/2405
Lowered fork height	mm	90
Fork size(length/width/thickness)	mm	1150(1220)/185/55
Overall length	mm	1634
Overall width	mm	790
Outside width between forks	mm	550/600/650/685
Inside width between forks	mm	180/230/280/315
Min.Turning radius	mm	1262
Min.Aisle width for pallets 800×1200	mm	1841
Min.Aisle width for pallets 1000×1200	mm	1883
Min.ground clearance	mm	30
Performance		
Travel speed,laden/unladed	km/h	3/3.5
Lift speed,laden/unladed	mm/s	120/180
Lowering speed,laden/unladed	mm/s	120/120
Gradeability,laden/unladed	%	5/7
Electrical configuration		
Drive motor/Lift motor/Steering motor	kW	DC0.63/DC2.0
Battery voltage	V	24
Battery capacity	Ah	85
Brake		Electromagnetic/Regenerative
Controller		HELI(Options CURTIS)
Weight		
Battery weight	kg	52
Service weight with battery	kg	460

* Details of specifications and equipment are based on information available at time of printing and may change without notice.



ANHUI HELI CO., LTD.

ADD: NO.668 Fangxing Street, Economical Development Zone, Hefei, P.R.China

TEL : (86 551)63639068, 63639258, 63639358, 63662105, 63639530

FAX : (86 551)63639966

WEBSITE : <http://www.helichina.net>

Email : hel@helichina.net

AUTHORIZED DEALER